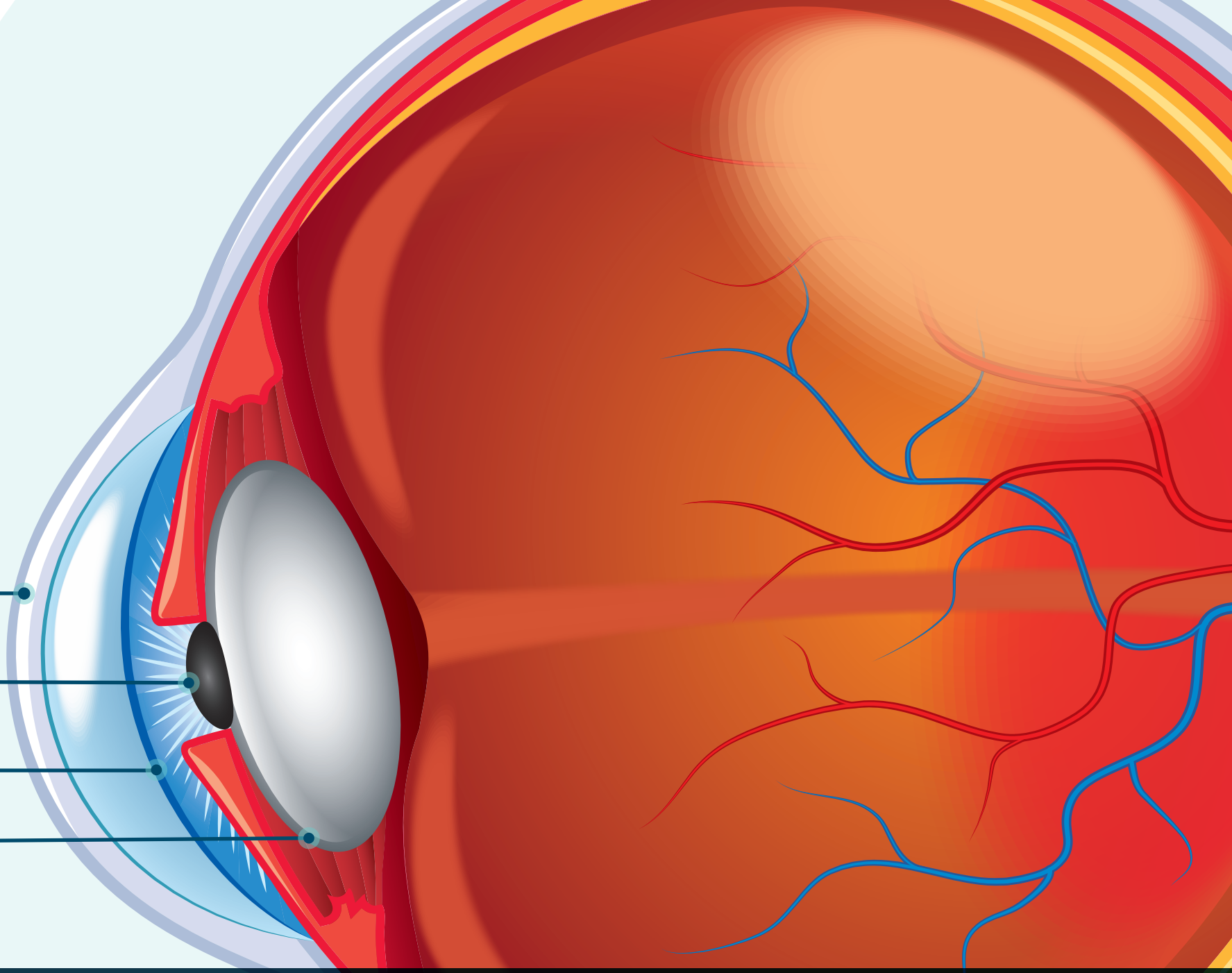


UNDERSTANDING CATARACTS

your vision

CORNEA
PUPIL
IRIS
LENS



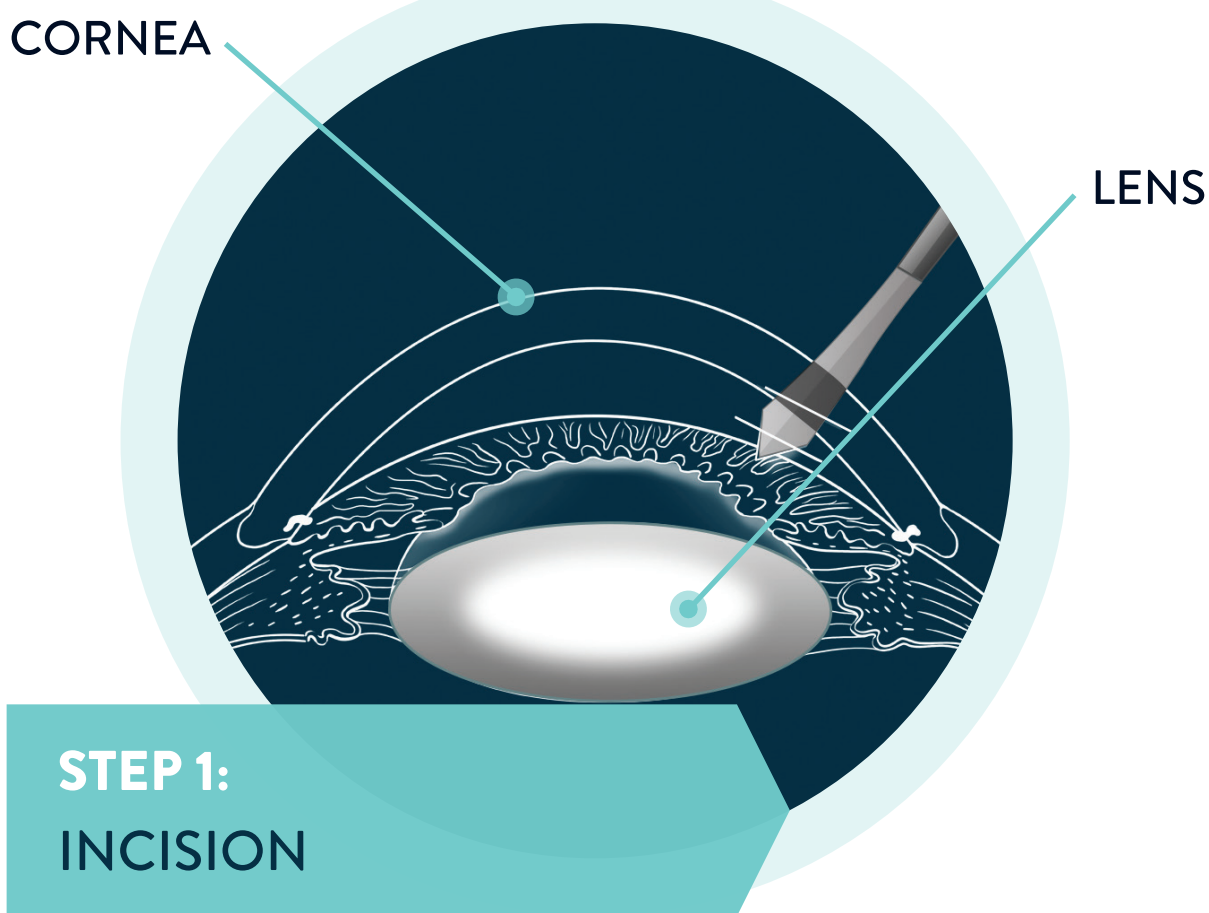
WHAT IS A CATARACT?

In a healthy eye, the proteins and water that make up the natural lens allow light to pass through without obstruction. As we age, those proteins can clump together, causing our vision to become cloudy. That clump of protein is called a cataract.¹



If you have cataracts, you are not alone. Over 24 million Americans have cataracts. Cataract surgery is one of the safest, most successful procedures available,² and over 2 million corrective surgeries are performed annually.³

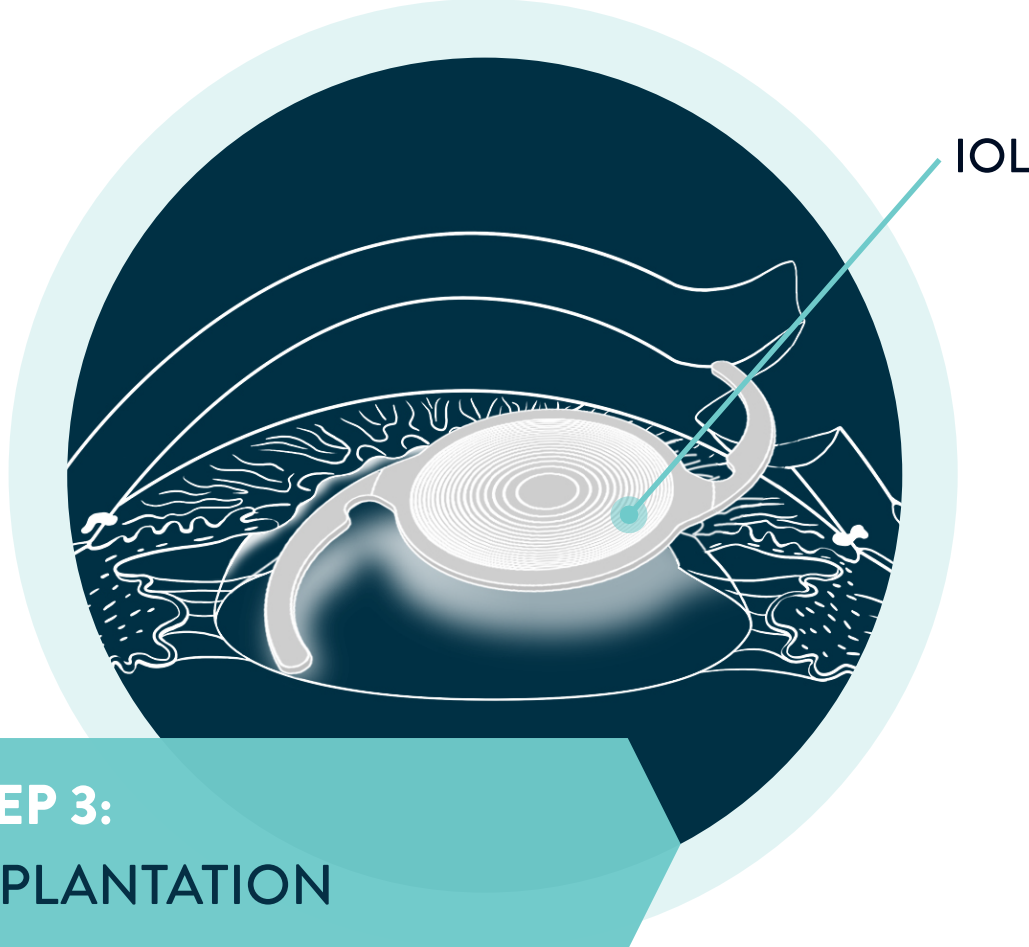
CATARACT SURGERY



To remove your cataract, your surgeon will make an incision in your cornea and lens capsule.²



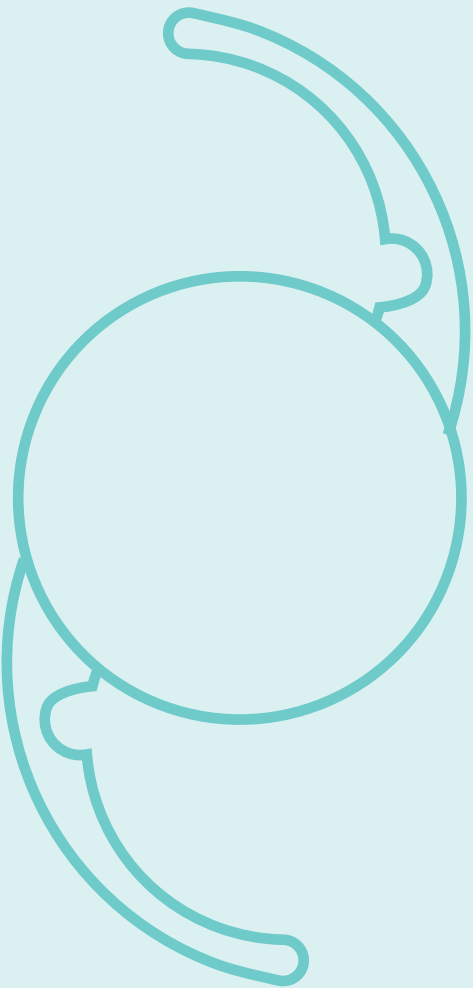
Using a technique called phacoemulsification, your surgeon will break up and remove your clouded lens.²



An artificial lens called an IOL, or intraocular lens, will then be implanted to properly focus light in your eye and correct your vision.²

YOUR LENS OPTIONS

No matter your lifestyle, there's an intraocular lens designed to fit your unique visual needs and priorities.



	NEAR	INTERMEDIATE	DISTANCE	ASTIGMATISM CORRECTION
TECNIS Symphony® IOL Full range of brilliant, continuous vision				
TECNIS Symphony® Toric IOL Full range of continuous vision with astigmatism correction				✓
TECNIS® Multifocal 1-Piece IOLs Full range of outstanding vision with enhanced focus where you'll use it most				
TECNIS® Toric 1-Piece IOL Clear distance vision with astigmatism correction				✓
TECNIS® Monofocal 1-Piece IOL Excellent distance vision for activities like driving				

INDICATIONS AND IMPORTANT SAFETY INFORMATION FOR THE TECNIS® FAMILY OF 1-PIECE IOLs Rx Only

INDICATIONS FOR THE TECNIS® 1-PIECE MONOFOCAL IOL: The TECNIS® 1-Piece Lenses are indicated for the visual correction of aphakia in adult patients in whom a cataractous lens has been removed by extracapsular cataract extraction. These devices are intended to be placed in the capsular bag. **INDICATIONS FOR THE TECNIS® TORIC 1-PIECE IOL:** The TECNIS® Toric 1-Piece Posterior Chamber Lens is indicated for the visual correction of aphakia and pre-existing corneal astigmatism of one diopter or greater in adult patients with or without presbyopia in whom a cataractous lens has been removed by phacoemulsification and who desire improved distance vision, reduction in residual refractive cylinder, and increased spectacle independence for distance vision. The device is intended to be placed in the capsular bag. **INDICATIONS FOR THE TECNIS® MULTIFOCAL 1-PIECE IOLs:** The TECNIS® Multifocal 1-Piece intraocular lenses are indicated for primary implantation for the visual correction of aphakia in adult patients with and without presbyopia in whom a cataractous lens has been removed by phacoemulsification and who desire near, intermediate, and distance vision with increased spectacle independence. The intraocular lenses are intended to be placed in the capsular bag. **INDICATIONS FOR THE TECNIS SYMPHONY® AND TECNIS SYMPHONY® TORIC IOLs:** The TECNIS Symphony® Extended Range of Vision IOL, model ZXR00, is indicated for primary implantation for the visual correction of aphakia, in adult patients with less than 1 diopter of pre-existing corneal astigmatism, in whom a cataractous lens has been removed. The lens mitigates the effects of presbyopia by providing an extended depth of focus. Compared to an aspheric monofocal IOL, the lens provides improved intermediate and near visual acuity, while maintaining comparable distance visual acuity. The model ZXR00 IOL is intended for capsular bag placement only. The TECNIS Symphony® Toric Extended Range of Vision IOLs, models ZXT150, ZXT225, ZXT300, and ZXT375, are indicated for primary implantation for the visual correction of aphakia and for reduction of residual refractive astigmatism in adult patients with greater than or equal to 1 diopter of preoperative corneal astigmatism, in whom a cataractous lens has been removed. The lens mitigates the effects of presbyopia by providing an extended depth of focus. Compared to an aspheric monofocal IOL, the lens provides improved intermediate and near visual acuity, while maintaining comparable distance visual acuity. The model Series ZXT IOLs are intended for capsular bag placement only. **IMPORTANT SAFETY INFORMATION:** If your eye is not healthy, you may not get the full benefits of the TECNIS® Family of 1-Piece IOLs. Patients should discuss all risks and benefits with their eye doctor before surgery. **ATTENTION:** Reference the Directions for Use for a complete listing of Indications and Important Safety Information.

Johnson & Johnson VISION

REFERENCES

1. "Facts About Cataract." *National Eye Institute*. National Institutes of Health, Sept. 2009. Web. 19 Apr. 2016. <<https://nei.nih.gov/health/cataract/cataract-facts>>. 2. "Cataract Surgery." *American Optometric Association*. Web. 19 Apr. 2016. 3. Dang, Shirley. "Cataract Surgery Infographic." *Eye Health. American Academy of Ophthalmology (AAO)*, 10 June 2014. Web. 19 Apr. 2016.

TECNIS and TECNIS Symphony are trademarks owned by or licensed to Abbott Laboratories, its subsidiaries or affiliates.

© 2017 Abbott Medical Optics, Inc. All rights reserved. PP2017CT0076